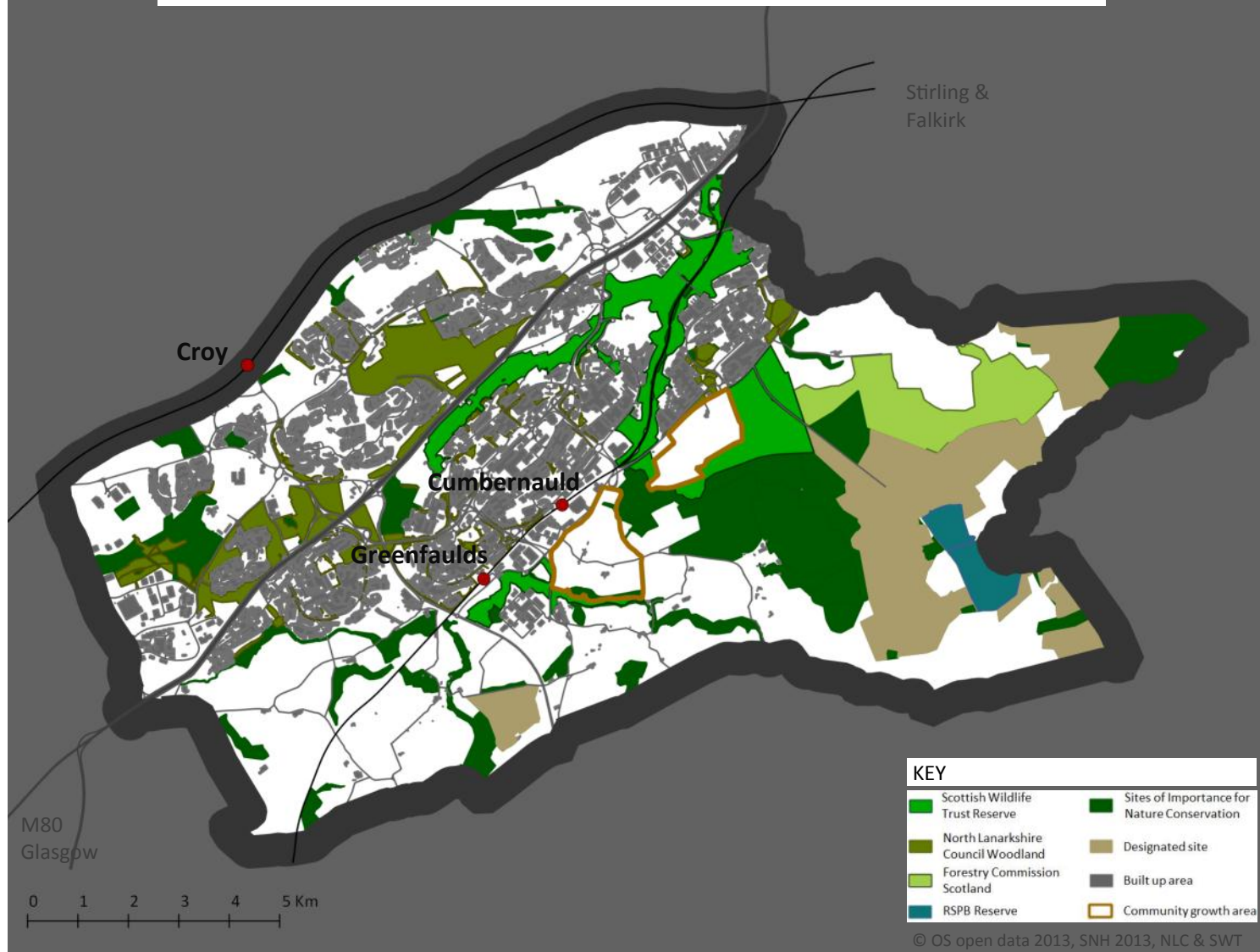


# Cumbernauld Living Landscape



## Urban ecosystem restoration in Central Scotland

The Cumbernauld Living Landscape programme aims to reinforce and expand existing green networks and reconnect the people of the town to their natural environment. In the urban landscape this transformational change will benefit local people, help wildlife and support the regional economy.

There is increasing evidence that high quality wildlife rich greenspace - connected through woodlands, glens, meadows and rivers - improves wellbeing and brings social and economic benefits to local communities. However, throughout its short history the new town of Cumbernauld has seen the loss and degradation of many its important natural habitats. Those that have survived have become isolated in a landscape of development and industrialisation.

By taking action at a large scale now we can ensure that these areas are able to provide clean air, water and safe retreats for people and wildlife. This is crucial for the future survival of our towns and cities.

Creating multifunctional ecosystems and quality green spaces through the heart of the town, the Cumbernauld Living Landscape will protect the environment and create places in which people want to live their lives.

- 55,000 people live in the 5,900ha project area
- 23% of the area is woodland
- Diverse range of plants and animals, including blue bells and recently discovered pine martens
- Biggest overwintering ground for bean geese in UK

# A recovery plan for nature

For Cumbernauld to develop and continue to provide us with the quality of life that we desire we need to take a new approach to conservation. By joining forces and working together we can work on a large scale with local people, business and landowners to meet the demands of new houses, jobs and transport infrastructure whilst benefiting from the environment around us.

The project vision is shared by neighbouring landowners, Scottish Wildlife Trust, North Lanarkshire Council and the Forestry Commission Scotland, who together are the project leaders. By working with a wide range of partners and local groups the lead organisations will build upon previous success to deliver and develop projects that:

Connect, enhance and manage over 900 ha of woodland	Enhance community activities in the natural environment	Influence the design of green infrastructure and sustainable place-making
Restore and manage 250 ha peatland to reduce erosion whilst capturing carbon	Protect the green network through strategic land-swaps	Improve water quality by expanding Sustainable Urban Drainage Systems (SuDS)



© Katrina Martin

## How you can help us achieve our vision

- Support projects that are taking action at a local grass roots level and volunteer your time or expertise.
- Make your garden wildlife friendly by planting flowers that attract bees and butterflies or creating a pond to encourage amphibians.
- Ask your elected officials to champion high quality, wildlife rich, sustainable developments.
- Be an ambassador for the Cumbernauld Living Landscape project.



© Katrina Martin

## Urban wildlife



© Katrina Martin/2020VISION

Cumbernauld is mostly urban and industrial in nature but wildlife can still flourish and people are able to enjoy it. Gardens, school grounds and parks provide stepping stones for bats, birds and bees to move between habitats.

Native bluebells carpet the ancient woodlands of Cumbernauld Glen whilst the wind-swept peat moorland support a diverse range of plants and animals.

The well managed farmland to the south of Cumbernauld provide the overwintering grounds for the rare bean geese.

The recent return of pine marten to Cumbernauld shows how healthy ecosystems can support a diverse range of species in this urban setting.

### Contact details

Ian Mackenzie  
*Project Development Manager*  
*Cumbernauld Living Landscape*  
 imackenzie@swt.org.uk

[www.scottishwildlifetrust.org.uk/Cumbernauld-living-landscape](http://www.scottishwildlifetrust.org.uk/Cumbernauld-living-landscape)

The Scottish Wildlife Trust is a company limited by guarantee and registered in Scotland (registered no. SC040247). It is also a Scottish registered charity (charity no. SC005792).

The Cumbernauld Living Landscape is led by the Scottish Wildlife Trust, North Lanarkshire Council and the Forestry Commission Scotland. Its development is supported by the Central Scotland Green Network. The following organisations and community groups have contributed to the Living Landscape programme plan: Central Scotland Forest Trust, Friends of Cumbernauld Community Park, Friends of Cumbernauld Glen, Friends of Cumbernauld House Park, Froglife, Kyle Citizens Community Hub, Scottish Water, Wild Media Foundation.