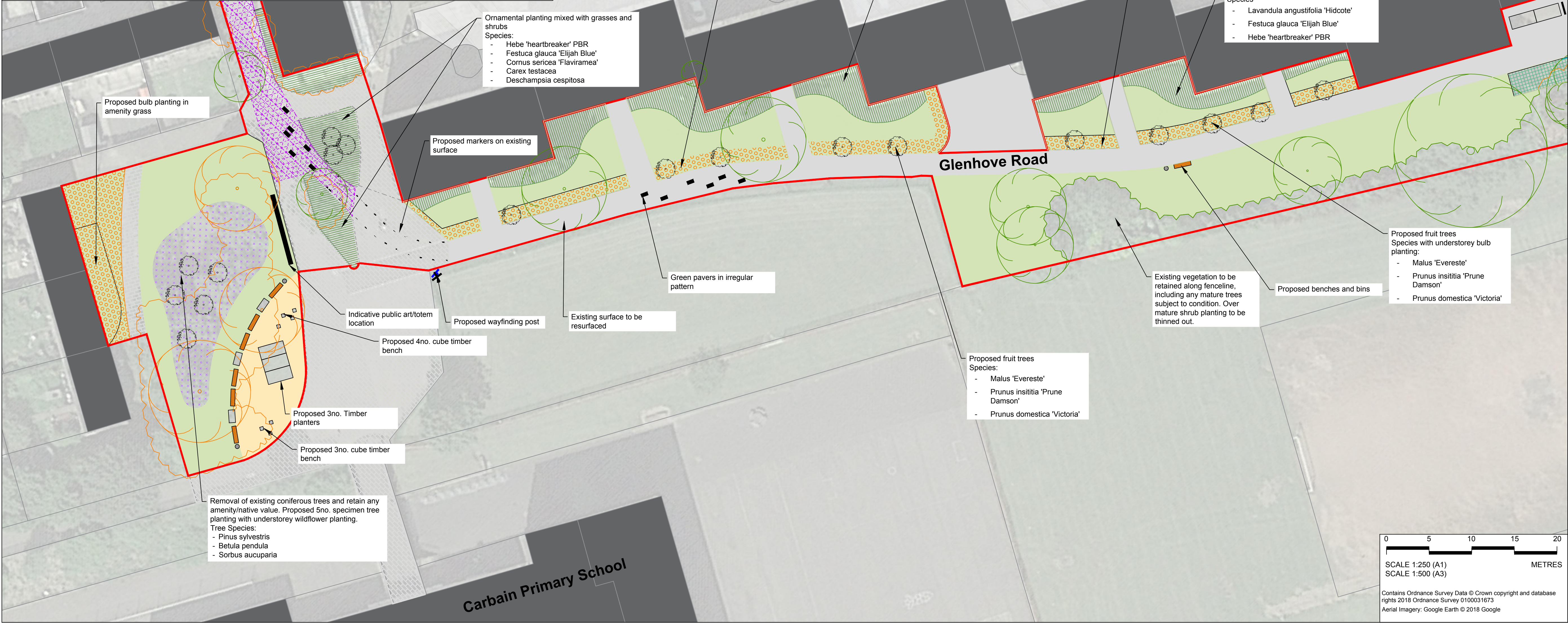
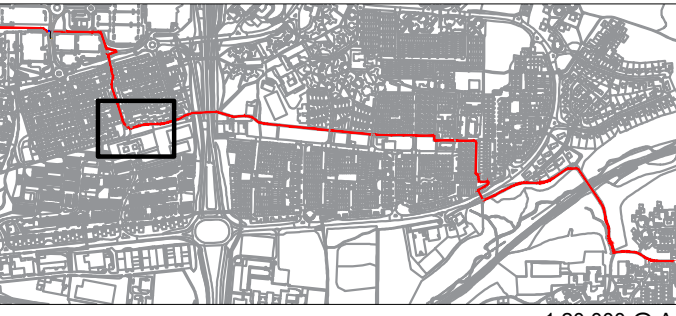


Carbrain Primary School - Aims & Aspirations

- 1. Planting will include edible fruiting species and flowering trees, reflecting the residential scale of the space.
- 2. Multifunctional spaces adjacent to Carbrain Primary School, will create a meeting point with seating and potential for a small scale community garden with raised planters.
- 3. There is potential to include elements of natural play within the space adjacent to Carbrain School.
- 4. Ornamental boundary and bulb planting will create subtle definition between public thoroughfare and front garden spaces.



Location Plan



Legend

- Site boundary
- Existing
  - Buildings
  - Roads
  - Amenity grass
  - Vegetation to be retained
  - Vegetation to be removed
  - Trees to be retained subject to age and condition
  - Paving to be resurfaced
  - Paving
  - Tarmac
- Proposed
  - Bench and bin
  - Bulb planting
  - Ornamental/ shrub planting
  - Resin bound surface
  - Timber cube benches
  - Specimen trees
  - Sown wildflower planting
  - Timber planters
  - Markers in existing surface
  - Wayfinding post

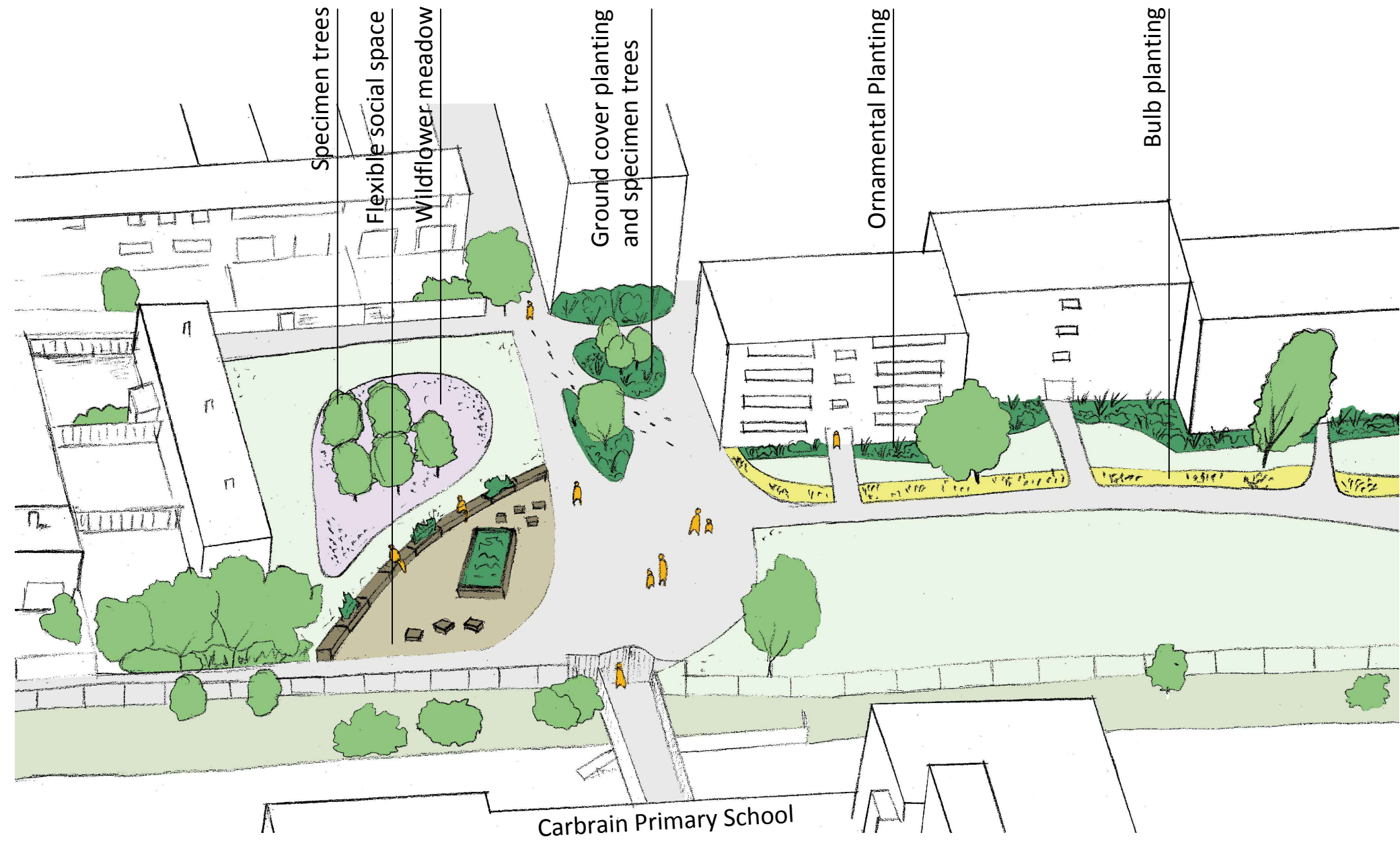
Proposed Interventions



Key Plant Species



Indicative sketch of proposals



Existing Condition Photographs

