

Early Connections

Wild about Nectar Networks



Basic parts of a flower



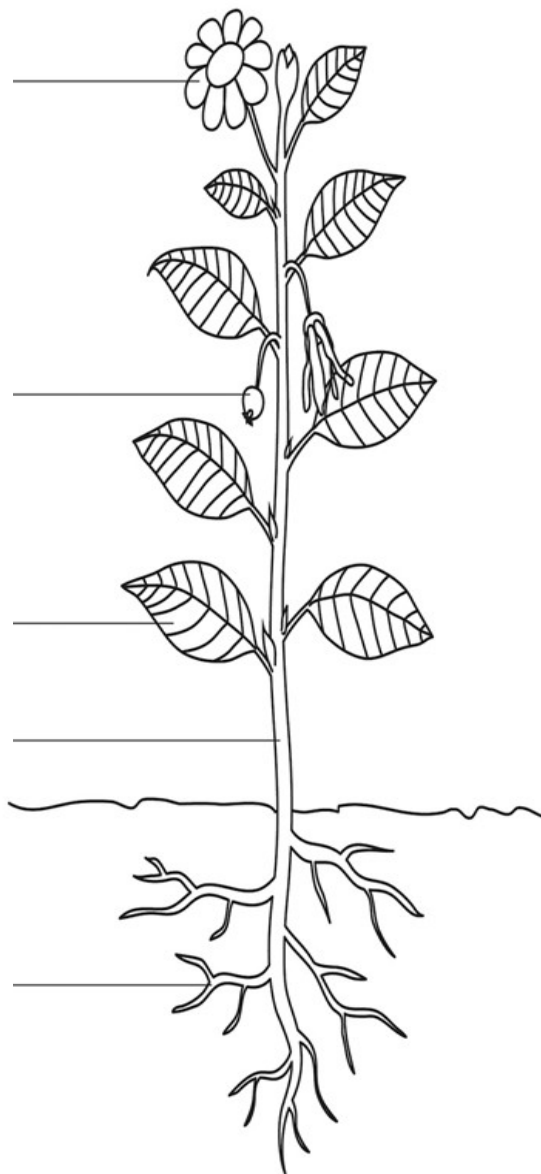
F _ O _ E _

S _ E _

L _ A _

S _ E _

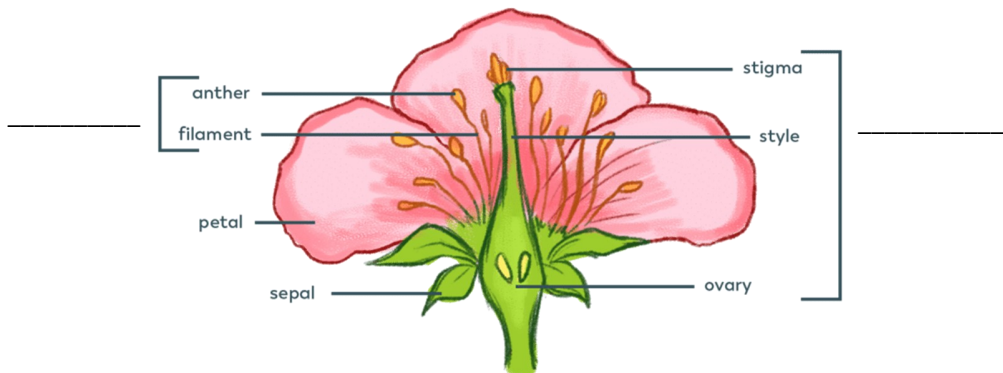
R _ O _ S



Reproductive parts



Which side is male and which is female?



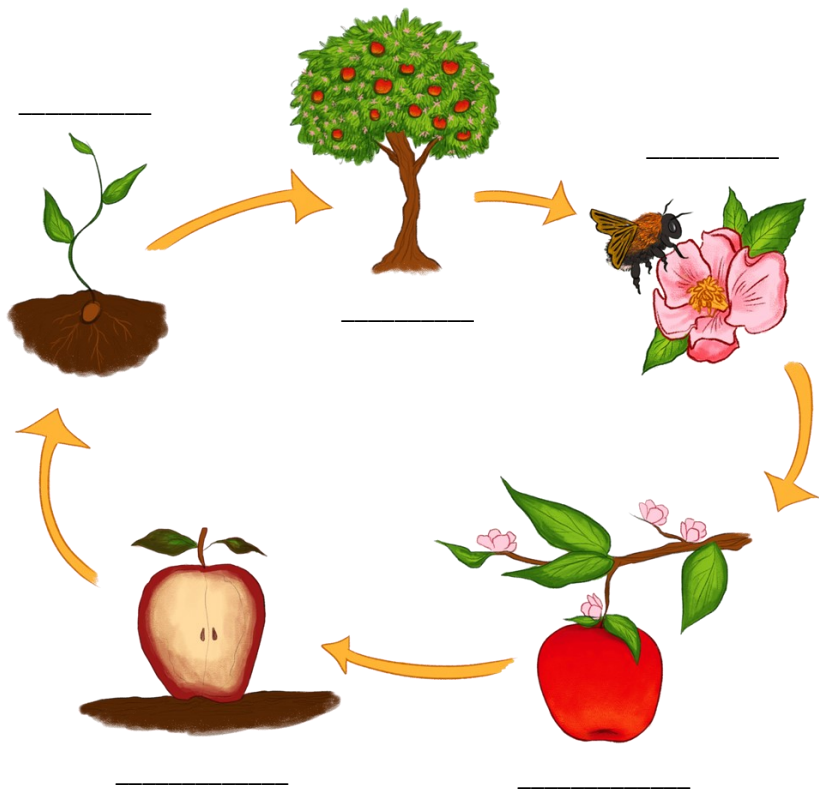
Can you find the words which are in the picture above in the word search below? Look out for words up and down, forward and diagonally placed.



Pollination



Can you fill in the missing words?



Native Planting



Native planting is very important to the wildlife of Scotland. Our wildlife use native plants and trees for food and shelter , it is difficult for them to use non-native plants in the same way and many non-natives are harmful to our wildlife.

The following pages contain a recording sheet for you and your class to explore the school grounds to record any plants that you find there. One you find a plant draw or photograph (print and stick photo in the box on the page) then as a group discover if your plant colour, size, name and is native or non–native? Here are some plants to start you off



Odd one out

Which of these is not like the other?



Hint: who are the pollinators?



My plant

Draw your plant here.

What time of year is it?

What colours can you see?

Who do you think pollinates your plant?

What do you your plant is called?

What size is it?

Cumbernauld Living Landscape

You can find out more about the fantastic projects that are happening to improve your connection to nature in Cumbernauld's on our Website.

<http://cumbernauldlivinglandscape.org.uk/>

