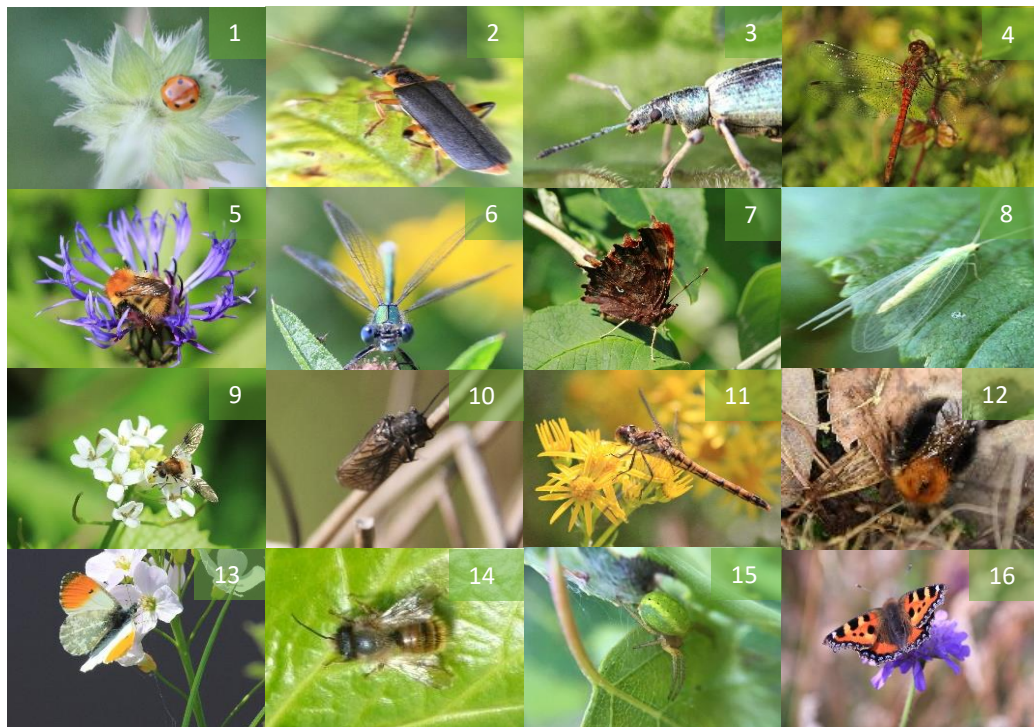




# Bug Bingo



- |                            |                                   |
|----------------------------|-----------------------------------|
| 1. Ladybird                | 9. Sawfly                         |
| 2. Red soldier beetle      | 10. Alderfly                      |
| 3. Weevil                  | 11. Common darter                 |
| 4. Red darter              | 12. Tree bumblebee                |
| 5. Common carder bumblebee | 13. Orange-tip butterfly          |
| 6. Emerald damselfly       | 14. Red mason bee                 |
| 7. Comma butterfly         | 15. Cucumber spider               |
| 8. Green Lacewing          | 16. Small tortoiseshell butterfly |

Can you find a line of bingo or even a full house!