



Identify and Colour a Bumblebee

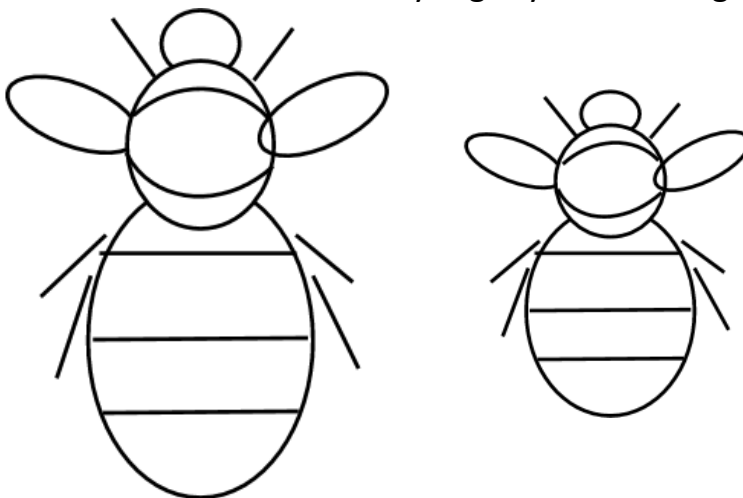
There are lots of different species of bee that visit our gardens and greenspaces and with a bit of practice anyone can learn to identify at least the most common types

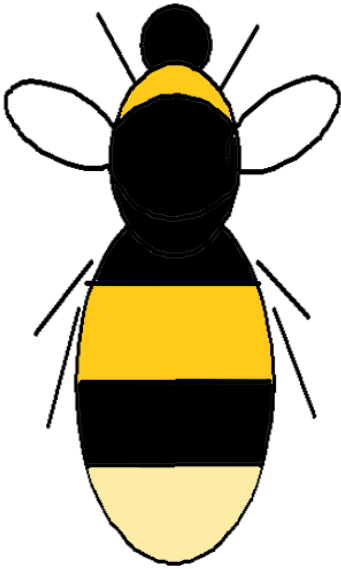
There are 19 species of bumblebee found in Scotland but 7 of these are especially common and are likely to be found in almost any garden or green space.

The best way to tell these species apart is to look for the pattern of stripes on their bodies – paying especially close attention to the colour of their tail stripe.

We've drawn and coloured some pictures on the next few pages showing the patterns to look for – and we've given you some blank templates for you to fill in with the colours of the bumblebees you find! We've also included the Blaeberry Bumblebee which is a bit less common but may be seen in Cumbernauld

We've shown the Queen and the Worker for each species. Queens are the large bumblebees you often see in early Spring, workers are generally smaller and seen all summer. The Males do not appear until late summer and are usually slightly different again.

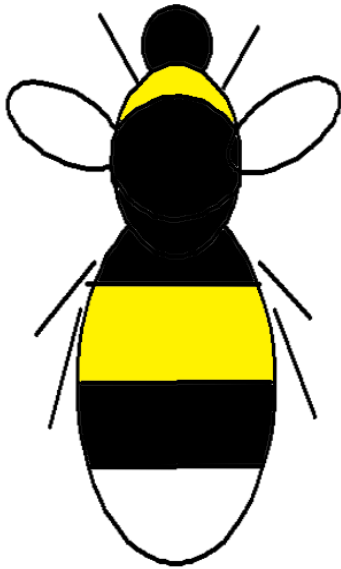
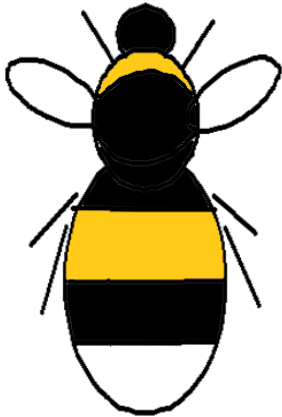




Queen

Buff Tailed Bumblebee

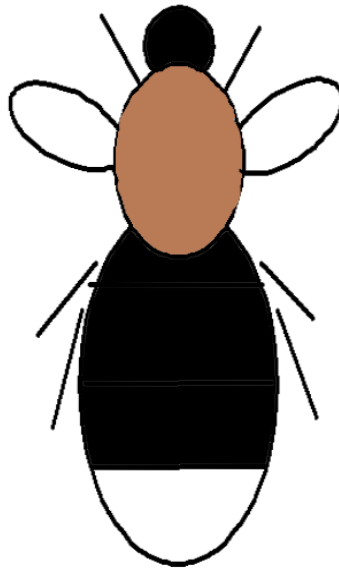
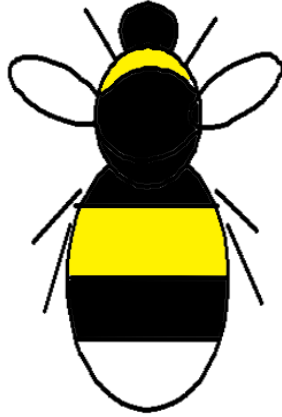
Worker



Queen

White Tailed Bumblebee

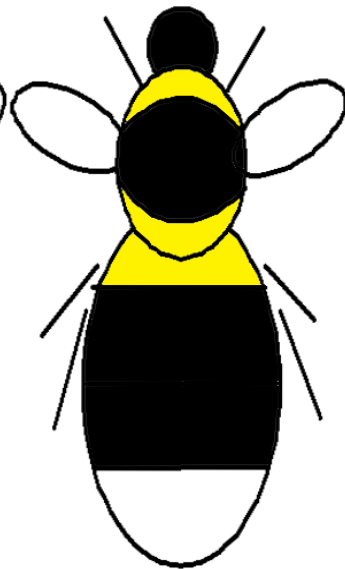
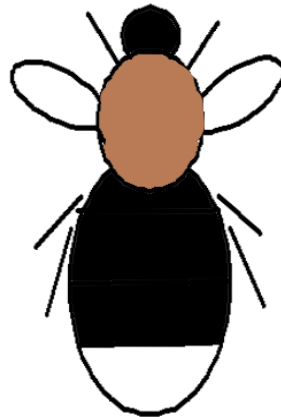
Worker



Queen

Tree Bumblebee

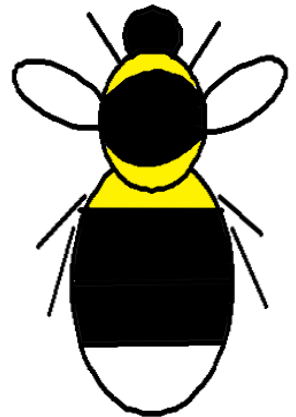
Worker

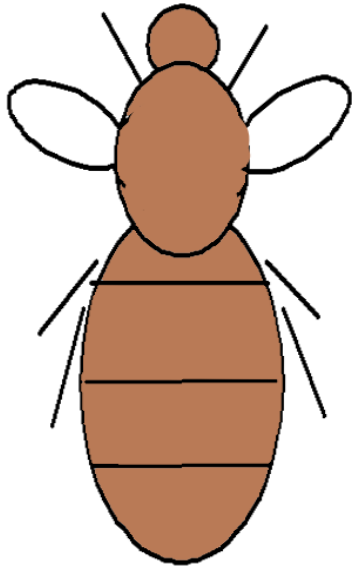


Queen

Garden Bumblebee

Worker

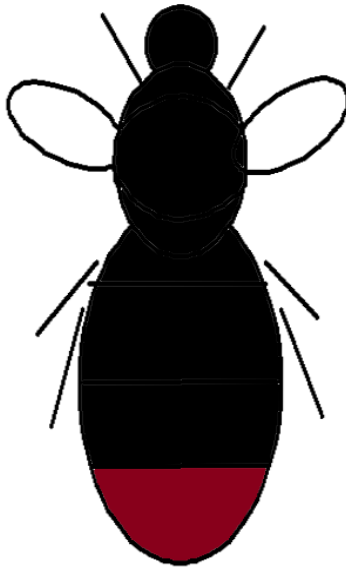
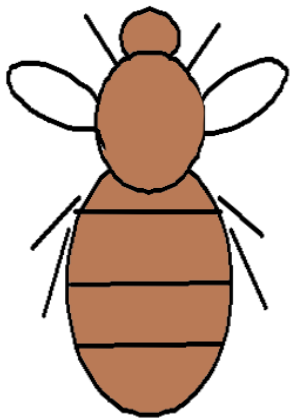




Queen

Common Carder Bumblebee

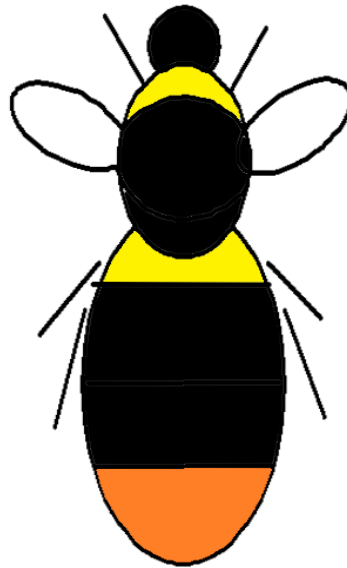
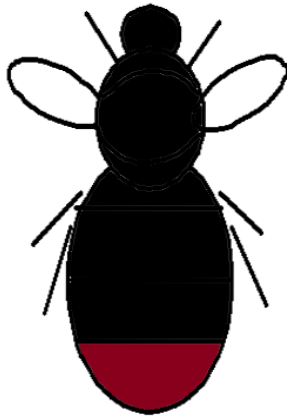
Worker



Queen

Red Tailed Bumblebee

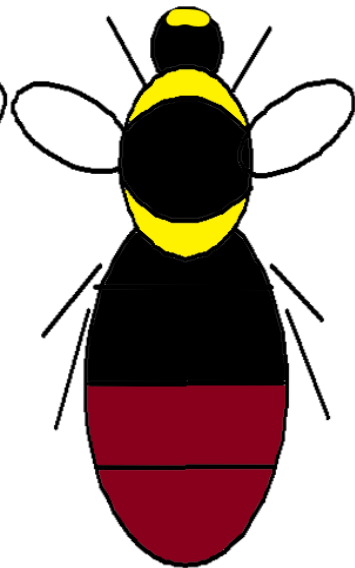
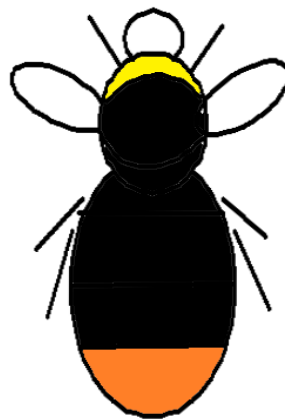
Worker



Queen

Early Bumblebee

Worker



Queen

Blaeberry Bumblebee

Worker

